

SS160Plus Smart Console



Tank gauge console is the tank monitor, one key part of the complete automatic tank gauging system. With the tank monitor, you can see the detail information of underground or/and aboveground storage tanks, like oil level, water level, oil temperature and oil volume etc. It is also the communication display platform between ATGs and users. Alarm value, tank information, etc., also can be user-defined.

Open communication protocol to fuel management system.

SS160Plus tank gauge console is an enhanced console in Windbell console family. It offers a multi-function operation platform on colorful touch display. Sensitive and strong data process ability, greatly improve the management efficient and save costs! The reliable performance has highly reputations from thousands station owners.



Whenever you need accurate inventory, delivery & sales data, Windbell Automatic Tank Gauge is here and can meet your requirements.

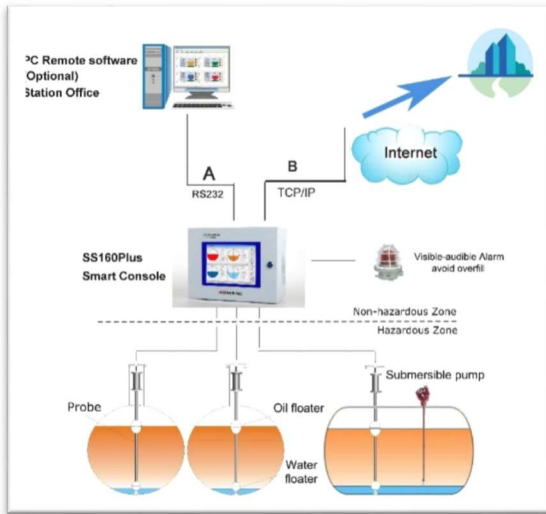
Features

- Real time monitoring product level, water level, volume and temperature.
- International graphic touch screen and user-friendly icons, one touch see all.
- Automatic alarm and alarm report, show any abnormal status of tanks.
- Support import & export tank volume table, very convenient for console setting.

Tank No	Height	Volume
1	0	0
2	10	8.7
3	20	24.7
4	30	45.2
5	40	69.4
6	50	96.7
7	60	126.8
8	70	159.4
9	80	194.3
10	90	231.2
11	100	270.1

- International weights and measures satisfy most countries' requirement.
- English operating language as default, support Spanish, Portuguese, Russian, Mongolia and Cambodian, more in future.
- Shift duty function and shift report can help you manage station's daily operation more easy and efficient.
- Automatic generates delivery report.
- Printing reports by extend printer.
- Programmable leak detection.
- Support to connect leak sensor.
- Support GSM modem for SMS.
- Support TCP/IP

- Compatible with PC software PCR200 and fuel management software by openly communication protocol.



Technical parameters

- Power: AC220V, 0.2A, 50/60HZ
- Working temperature: -20 to 60 °C
- Install location: Safety place
- Display resolution: 800*600
- Display size: 8'' full color LCD
- Safety barrier: WB-GSB03
- Explosion proof grade: [Exia Ga] II A
- 1 USB port for program upgrading
- 2 RS232 serial communication ports: connect to printer, computer, GSM Modem
- 1 RS485 serial communication port: connects to probe.
- Monitor 6 tanks as standard, can extend to monitor 9 tanks.
- Support up to 40 sensors.
- Replay output: 2 groups. Node capacity AC250V/3A, DC30V/3A
- Dimension: 5.7*11.8*9.0''
(14.5*30*23cm)
- Weight: 10 kg

Options

- GSM Modem
- Thermal printer
- Submersible pump console EM02
- Anti-overfill valve DFV100Tank-side display WB-TSD
- PC Remote software PCR200
- Leak detection sensor
- Visible-audible alarm

Product application



Windbell Measurement and Control Technology Co., Ltd

No.9 Changchun Road, High-Tech development Zone, Zhengzhou, China

Tel: +86 371 6030 1609

Fax: +86 371 6030 1612

emily@windbelltek.com

www.windbellgauge.com

www.windbellatg.com

October 2016

www.windbellgauge.com