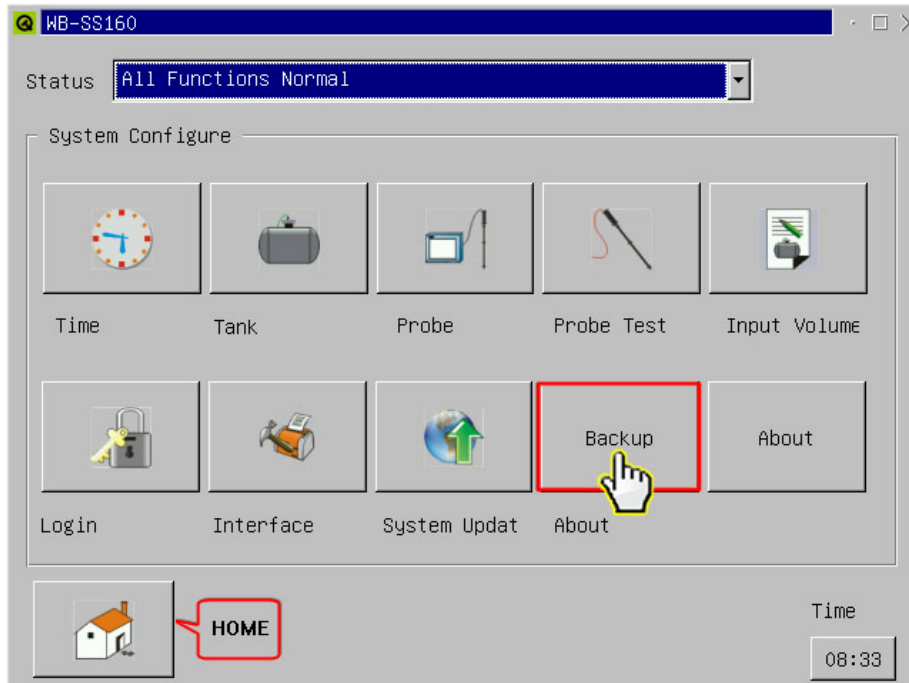


Possible problem

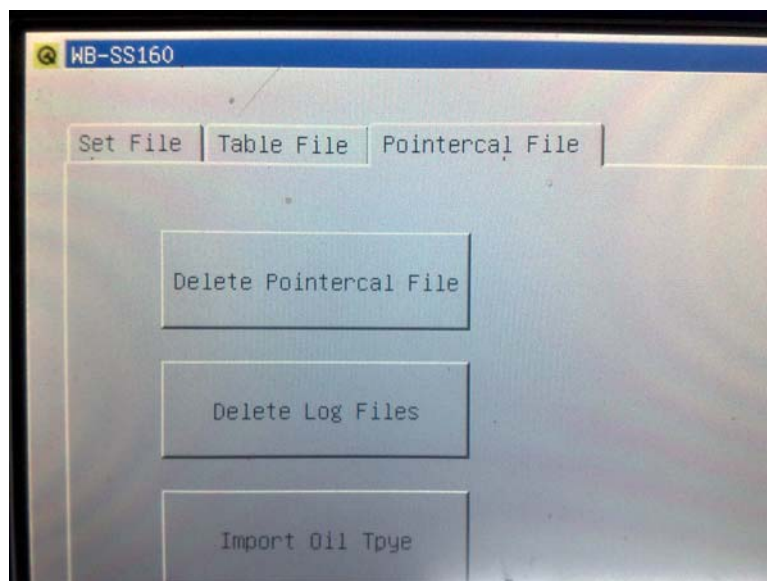
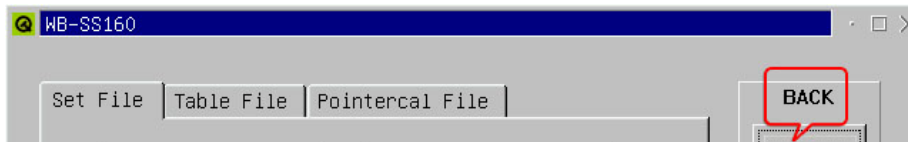
Touch screen response slowly or displayed dislocation

Solution as below

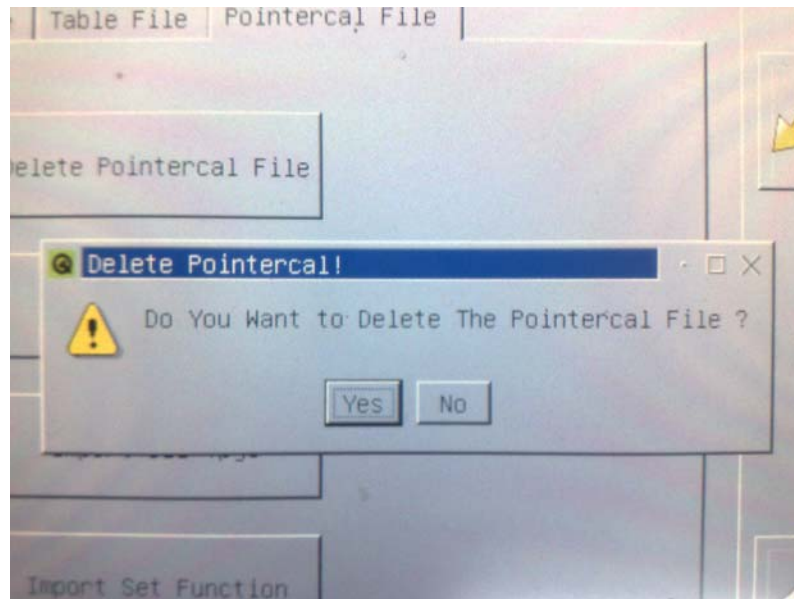
1. On SS160 console “System configure” interface, click “Backup”



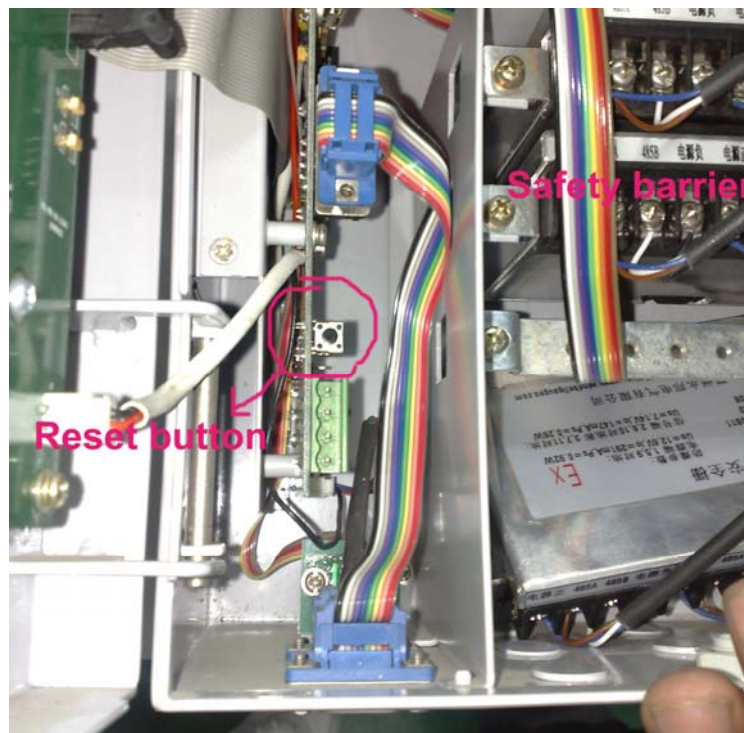
2. click “Pointercal File” ,you will see “Delete Pointercal File”



3. Click “ Delete Pointercal File”, there will indicates as below, choose “Yes”



4. Then power off, and Power on again, to restart system. Waiting about 30 seconds, screen calibration software will displayed as “Welcome to Qtopia.....” You can see one “+” sign on the left top of screen, click it, and follow “+” to click, After all, there will be indicates words like “Hello, World”. Calibrate ok.
5. Open SS160 console cabinet by key, you can see “reset button” (a tiny black button) inside, as below picture. Press one time this button.



6. Waiting about 30 seconds, touch screen will light again, and work normally.